



China LBAT

Shanghai

上海

上海

Shanghai and Qingdao

青岛

May 13 to July 17, 2022

在中国学中文有很多好处！

Studying Chinese in Chinese 3 Big Advantages (among many)

1. Use Chinese Everyday in Context!

2. Earn a Minor 副修!

—China LBAT: 12 Credits 学分

—Minor in Chinese: 15 Credits

3. Count towards Major 主修/专业!

-- need 33 credits total

4. Pay Instate Tuition 学费!!

China LBAT 2020 Virtual Info Session

中国：上海 — 青岛

Tuesday Oct. 26

4:30-5:30 pm

Virtual Drop In:

<https://bluejeans.com/712807664/7789>

Meet Instructors

Meet Directors

Meet Classmates

Q & A

See China LBAT Debriefings: Alumni Students' Own Words

- [A 62-day Blog Throughout the Whole LBAT Program in 2016](#), by 金荷英 (Hayoung Kim)
- [Eating in China & Budgeting for It](#), by 郝克雷 (Chris Harper)
- [Beijing Independent Excursion](#), by 丁凱綸 (Melissa Ting)
- [LBAT Funding through Scholarships](#), by 孔美璘 (Jamie Kazenstein)
- [Post-LBAT Chinese Track to State Department](#), by 譚天涂 (Ted Danowitz)
- [Huangshan National Park Independent Excursion](#), by 孔美璘 (Jamie Kazenstein)
- [Post-LBAT Internship at BMW in China](#), by 林深锐 (Cristina Lara)
- [Extra Excitement on Our Beijing Weekend Trip](#), by 白锐思 (Brice Edelman)

China LBAT 2022



上海 Shanghai and Qingdao 青岛 May 13 to July 17, 2020



Intensive Language Study

12 credits; 9 weeks

Shanghai (First 6 weeks):

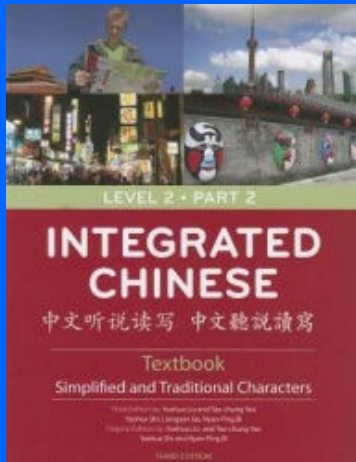
- **CHIN 3691:** *Chin for Current Events* (3 wks) 8:30-11:45 MTWR
- **CHIN 3692:** *Business Chinese* (3 wks); 8:30-11:45 MTWR

Shanghai & Qingdao (All 9 weeks):

- **CHIN 3693:** *Conversation Practicum* (all 9 wks) 11:45-12:45 MW
- **One-on-One Tutorial:** 20-30 minutes, TR or MW Afternoons

Qingdao (Last 3 weeks):

- **CHIN 3813:** *Living in China* (3 wks); 8:30-11:45 MTWR



*Integrated
Chinese
Textbook NOT
included in
Program Fee*



*Business
Chinese
Textbook
included in
Program Fee*

Prerequisite: CHIN 2002 or Equivalent

Covid Cancellation Policy & Back-up Plans

Program Charge (includes Application Fee) Refunded

In the event that China does not raise the quarantine restrictions of 14-21 days upon arrival, the China LBAT program will be cancelled and **your application fee and your paid Program Fee will be refunded in FULL**. Our make-or-break date is March 30, 2022, but we may know earlier

Back-up Plan 1:

We will direct you to a virtual intensive Chinese language program at SJTU or another university in China. Credits earned will be evaluated and transferred. Not as fun, BUT saves \$ over in-country program!

Back-up Plan 2:

We will suggest an intensive program in-country, but you will travel in advance to China and quarantine for the requisite time. Credits earned will be evaluated and transferred.

Directors/Instructors in Shanghai & Qingdao

Dr. Jin Liu 刘老师

- Jin.liu@modlangs.gatech.edu

Dr. Hongchen Wu 吴老师

- Jin.liu@modlangs.gatech.edu

Mr. Chao Li 李老师

- chao.li@modlangs.gatech.edu

Dr. Paul Foster 傅老师

- paul.foster@modlangs.gatech.edu
- Stateside Coordinator



Shanghai Class Schedule:

8:30am-12:45pm, MW
8:30am-11:30am, TR



Enhance:

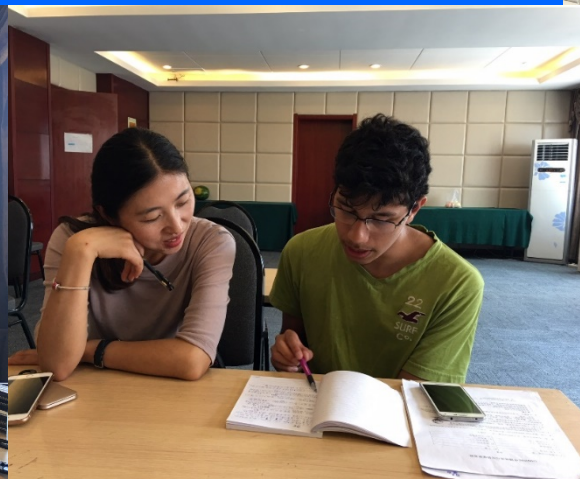
- Speaking
- Listening
- Reading
- Writing

Get Out of the Classroom! Enhance Your:

- Cultural Awareness
- Social Life
- Resume Experience

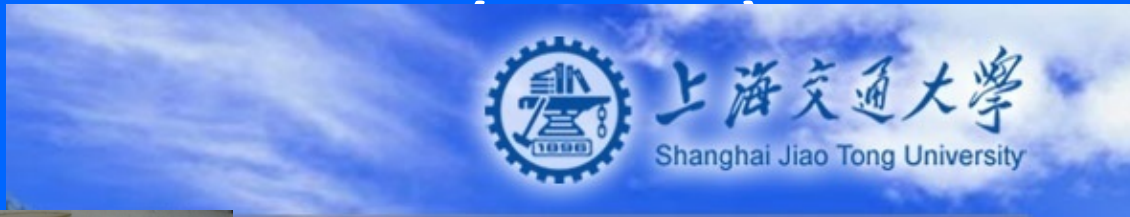


One-on-one Tutorial TR or MW Afternoons

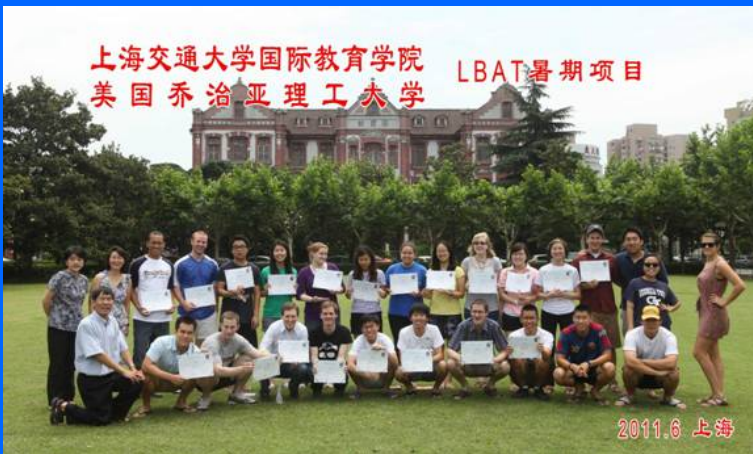


Host Institution:

Shanghai Jiaotong University (SJTU)



- Leading Engineering Univ.
- Central Shanghai Location
- Convenient to Activities in City
- Interaction with SJTU students



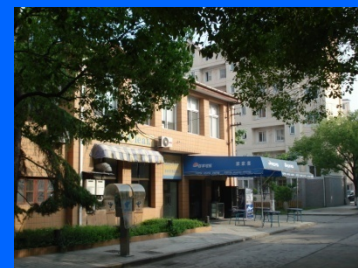
Faculty Club or Boxuelou Hotel



博学楼 或 教师活动中心



Convenient Campus Center of Activity; AC equipped, Double Rooms w Bath; Internet Access; Near to Laundry; Near to Classrooms



Introductory City Tour: Get Situated



Shanghai

3 Cultural Site Visits 3 Business Site Visits



Yu Yuan 豫园 Garden



Zhujiajiao/Zhouzhuang/Qibao Ancient Town



Cultural Classes: Taiji 太极

Interaction with local students, families, residents



Cultural Classes

Calligraphy and Chinese Painting

书法和绘画





Explore Shanghai

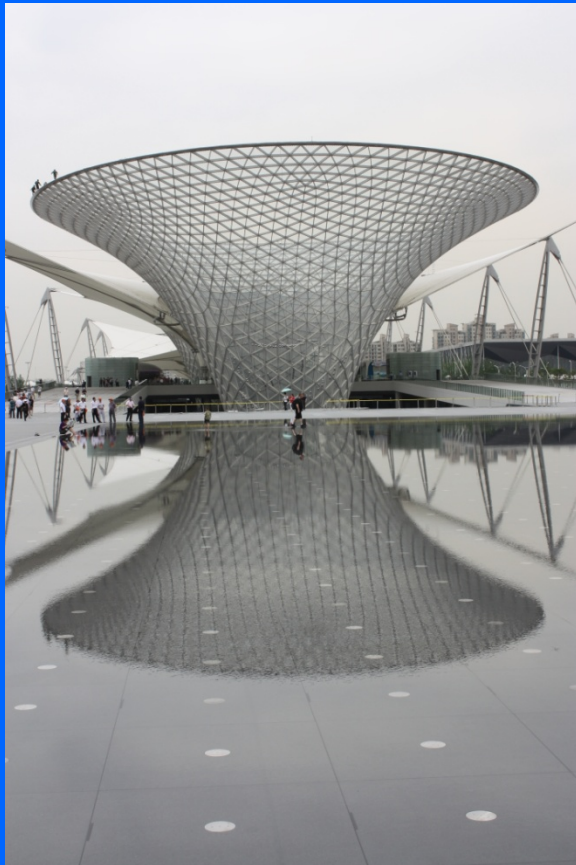


Where Will You Find the *Real* China?



Find an Angle

Photography?



Your Angle: Best Food?

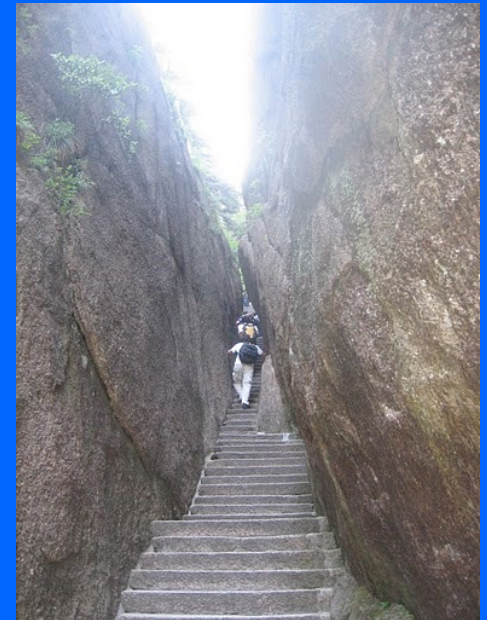
！好吃！



Your Angle: Chinese Culture & History?



王佛禪寺



Shopping & Night Life... Is this Your Angle?



Strolling @ Xintiandi
Experience the stories of Xintiandi on the scene



Develop Your Intercultural Humor...



- Funniest Story?
- Coolest Picture?
- Best Pun or Worst English on a T-Shirt?

Have Fun, Be Safe, Apply Yourself to Many Opportunities to Learn a Lot of Chinese!

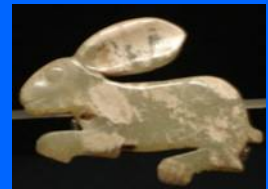


353广场体验区
Plaza 353 Experience Zone



..when you follow the white rabbit...

..then return and study more
Chinese!



Look for “Qingdao” – a city on the north China coast



Shanghai means “on the sea”



Qingdao is Actually on the sea!

Three weeks in Qingdao!

A counterpoint to Shanghai

This manageable and accessible city gives you a more three-dimensional view of the realities of contemporary China.

Diverse experience

North China (Shandong Peninsula) is a different world from South China (lower Yangzi estuary).

And more



a Beautiful city. . .



印象
Feelings



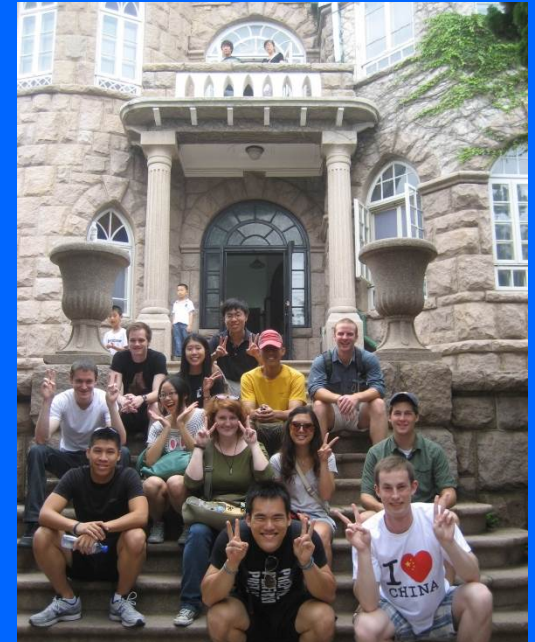
A Chinese City Built around Imperial German Architecture!

History that lives today:

- 1) Architectural & Cultural: Imperial German occupation; brewery
- 2) Shandong Province: cradle of the Boxer uprising; twice occupied by the Japanese
- 3) Qingdao was Chiang Kai-shek's last stop en route to Taiwan

Current events:

- 4) Qingdao currently part of the China-South Korea-Japan economic nexus
- 5) Other issues China is dealing with such as the environment and industry



Lao Shan Daoist Mountain/China Navy Museum



Company Visit, Haier...



China Navy Museum & The German Cathedral



German Governor's Mansion



The World's Longest Cross-Sea Bridge and Qingdao Expo



Group Dinners: Cornucopia of Seafood and Fresh Produce



Tea Tasting Ceremony 茶



Local Family Visit



We're OHANA! 我们是一家人



We're OHANA! 我们是一家人





Program Charge **\$5500*****

*****Refunded if Chinese Covid quarantine restrictions of 14-21 days are not raised and we have to cancel.**

- **Includes** \$250 application fee (non- refundable, unless cancelled)
- housing and classroom
- group ground trans.
- health insurance
- tutoring
- trip from SH to QD
- group dinners weekly
- cultural and business site visits
- cultural classes

Apply your Hope Scholarship!

Out-of-state students pay in-state tuition

*Fee does not include: tuition, independent ground transportation and meals

Budgeting: Program Fee Doesn't Include:

- Tuition (about \$340 per credit)
- Airline Tickets (approximately \$1600, varies)
- Qingdao return to Shanghai (about \$100) (many students elect to travel to Beijing and other areas on their own after program ends)
- Visa (approximately \$220)
- Independent Meals (frugal: approx. \$8/day)
- Independent Local Transportation (frugal approx. \$150)
- Entertainment (varies by student interest)

One student said they ate lunch for \$2 at the campus cafeteria daily!

Another student said they ate at a new restaurant each night!

Scholarship Opportunities!

Do your research:

- **HOPE Scholarship** applies!
- **Modern Languages' Campoamor Scholarship** (approx. \$400)
- **OIE Scholarship Information:**
 - Make an appointment with the Scholarship Advisor, Mary Alice Allen at maryalice.allen@oie.gatech.edu to learn more about the available scholarships.
 - Also apply through the Office of International Education and learn more at <https://oie2.gatech.edu/content/oie-administered-scholarships-application-form>



Application Deadline



February 15, 2022

Apply Online: OIE Website

(Application Fee \$250)

**Come to China for an Exciting
Summer!**



**See Our Website for Further
Info and Application Links**

<http://www.modlangs.gatech.edu>

Check out the LBAT students' experience at:

<https://www.youtube.com/watch?v=dwAyidxBwwE>

Covid Cancellation Policy & Back-up Plans

Program Charge (includes Application Fee) Refunded

In the event that China does not raise the quarantine restrictions of 14-21 days upon arrival, the China LBAT program will be cancelled and **your application fee and your paid Program Charge will be refunded in FULL**. Our make or break date is March 30, 2022, but we may know earlier

Back-up Plan 1:

We will direct you to a virtual intensive Chinese language program at SJTU or another university in China. Credits earned will be evaluated and transferred. Not as fun, BUT saves \$ over in-country program!

Back-up Plan 2:

We will suggest an intensive program in-country, but you will travel in advance to China and quarantine for the requisite time. Credits earned will be evaluated and transferred.

Regular Cancellation Policy

See Covid Cancellation Policy in previous slide if China quarantine restrictions of 14-21 days persist.

Regular Program: Program descriptions and fees are subject to final approval by educational units and the Office of International Education. Georgia Tech reserves the right to alter or cancel this program due to low enrollment, unavailability of a professor to teach a planned course, or other unforeseen circumstances. Once Georgia Tech has made payments to service providers, or if Georgia Tech cancels the program before departure or while the program is in progress for reasons beyond its control, such as political unrest or danger to participants' safety, only those fees that Georgia Tech is able to have refunded by service providers will be returned to participants. If a student withdraws before the application deadline no penalty is incurred beyond the non-refundable application fee. **If a student withdraws from the program after the application deadline, the student will be responsible for the payment of all fees.**

3 Mandatory Orientation Meetings @ GT



1. General Mandatory OIE Study Abroad Orientation Session (see OIE Website)
2. Two Chinese LBAT Orientation sessions in February and March, 2022

中国
上海
青岛



China
LBAT

Shanghai
上海

中国
上海
青岛

China LBAT 2020 Virtual Info Session

中国：上海 — 青岛

Tuesday Oct. 26

4:30-5:30 pm

Virtual Drop In:

<https://bluejeans.com/712807664/7789>

Meet Instructors

Meet Directors

Meet Classmates

Q & A